



# AutoCAD<sup>®</sup> Civil 3D<sup>®</sup> 2012

What's New

Case Technologies, Inc.



# Top Features

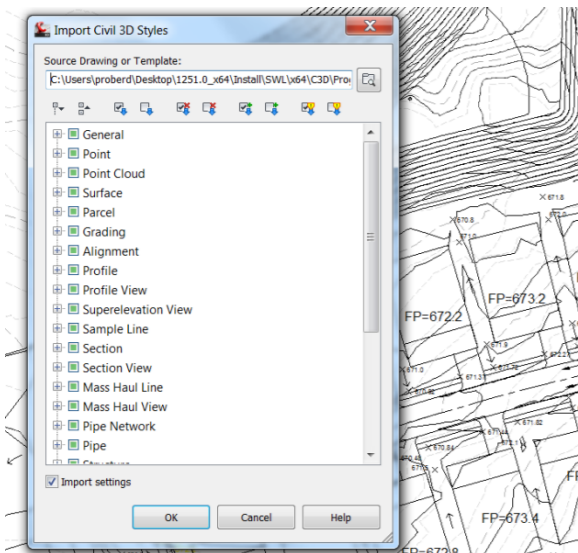
AutoCAD® Civil 3D® 2012

## Support

### Organizational Standards

Deliver Consistent, Coordinated Projects

- Style and Settings Management
- Labeling Improvements
- Integration with Autodesk® Vault Collaboration AEC 2012

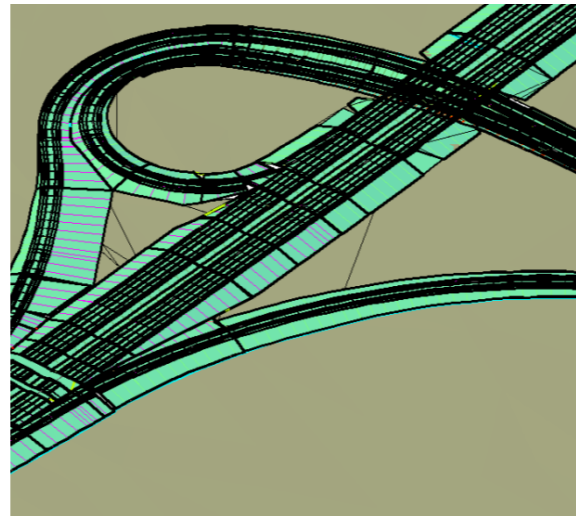


## Enhance

### Transportation Design

Explore Design Options

- Alignment Geometry
- Corridor Editing
- Superelevation



## Extend

### Visualization and Analysis

Analyze Project Performance

- Surfaces
- Water Analysis
- Civil Visualization



# Organizational Standards

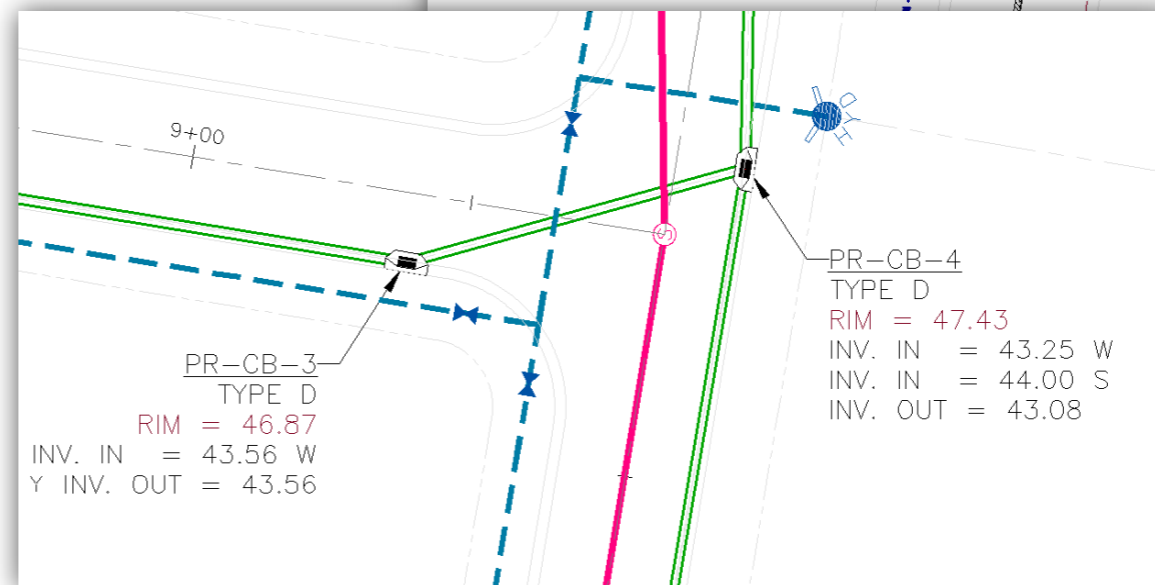
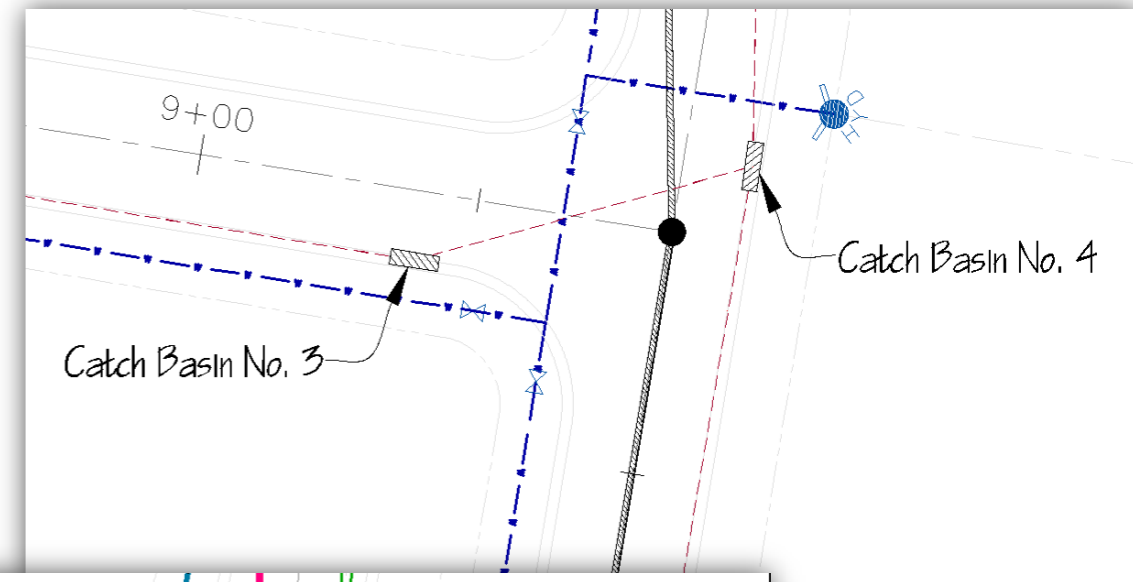


# Organizational Standards

AutoCAD Civil 3D 2012

## Style and Settings Management

- Copy styles
  - Bulk copy styles from another drawing
  - Options to delete style from current drawing
- Copy settings
- Replace Styles
- Purge styles
- Find styles in use



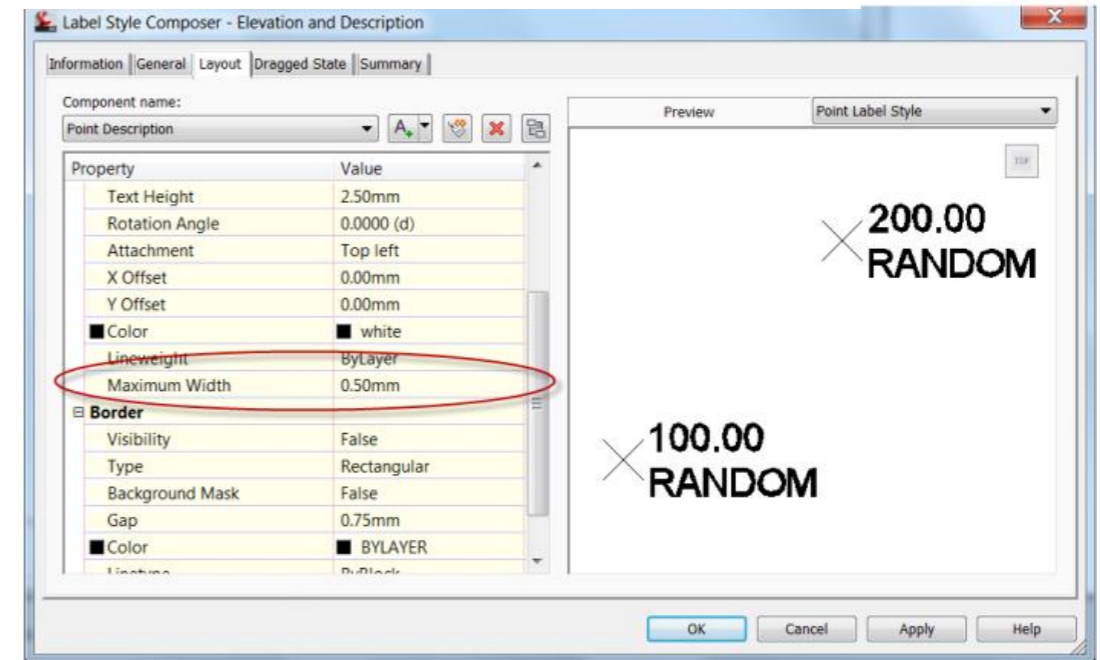
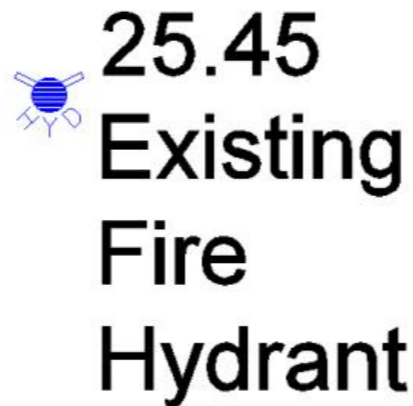
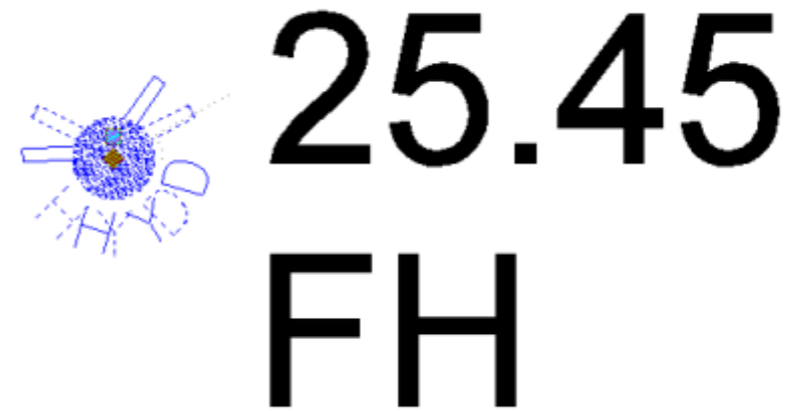
*Manage standards more easily*

# Organizational Standards

*AutoCAD Civil 3D 2012*

## Labeling Improvements

- Label rotation
- Maximum text width



*Making annotation even easier*

# Organizational Standards

AutoCAD Civil 3D 2012

## Integration with Autodesk Vault Collaboration AEC 2012

- Purpose-Built Civil 3D object management
- Multidiscipline project team support
- Integration with Sheet Set Manager

The screenshot displays the Autodesk Vault Collaboration AEC 2012 interface. The main window shows a file named 'C-Base Model.dwg' with a status of 'Approved' and '30% Complete'. Below this, a table lists the file's history, including the number of versions (6) and revisions (3). The table columns are: Thumbnail, File Name, Revision, State (Historical), Created By, Checked In, and Comments. The table shows four entries for 'C-Base Model.dwg' with different states: '30% Complete', 'Preliminary', 'For Review', and 'Work in Progress'. To the right of the table, a list of metadata fields is visible, including Description, Designer, Engineer, Engr Approved By, Keywords, Manager, Material, Mfg Approved By, Part Number, Project, Stock Number, Subject, and Title.

Thumbnail	File Name	Revision	State (Historical)	Created By	Checked In	Comments
	C-Base Model.dwg	30% Complete	Approved	Mike	1/26/2011 1...	
	C-Base Model.dwg	Preliminary	Approved	Mike	1/26/2011 1...	
	C-Base Model.dwg	A	For Review	Dan	1/26/2011 1...	Under
	C-Base Model.dwg	A	Work in Progress	Administrator	1/26/2011 1...	

*More robust data management for your team*

# Transportation Design

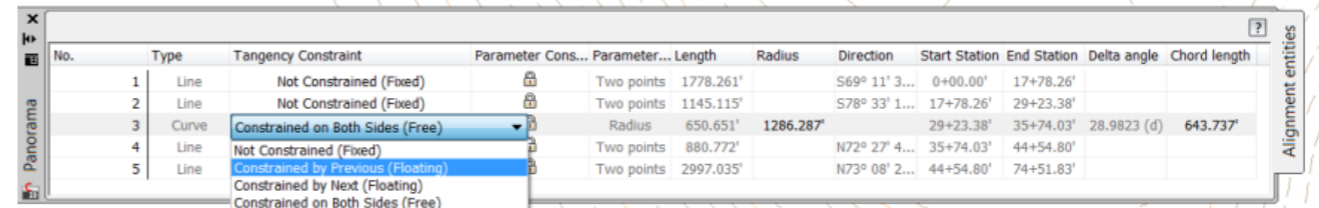


# Transportation Design

AutoCAD Civil 3D 2012

## Alignment Geometry Improvements

- Better handle alignment tangent and curve constraints
  - LandXML import includes constraints
- Navigate more easily with entity highlighting
- Check for tangency
- New annotation options



The screenshot shows a table of alignment entities with a dropdown menu for the 'Tangency Constraint' column. The table has the following data:

No.	Type	Tangency Constraint	Parameter Cons...	Parameter...	Length	Radius	Direction	Start Station	End Station	Delta angle	Chord length
1	Line	Not Constrained (Fixed)		Two points	1778.261'		S69° 11' 3...	0+00.00'	17+78.26'		
2	Line	Not Constrained (Fixed)		Two points	1145.115'		S78° 33' 1...	17+78.26'	29+23.38'		
3	Curve	Constrained on Both Sides (Free)		Radius	650.651'	1286.287'		29+23.38'	35+74.03'	28.9823 (d)	643.737'
4	Line	Not Constrained (Fixed)		Two points	880.772'		N72° 27' 4...	35+74.03'	44+54.80'		
5	Line	Constrained by Previous (Floating)		Two points	2997.035'		N73° 08' 2...	44+54.80'	74+51.83'		

The dropdown menu for the 'Tangency Constraint' column shows the following options: 'Constrained on Both Sides (Free)', 'Not Constrained (Fixed)', 'Constrained by Previous (Floating)', 'Constrained by Next (Floating)', and 'Constrained on Both Sides (Free)'. The 'Constrained on Both Sides (Free)' option is currently selected.

*Straightforward geometry creation and display*

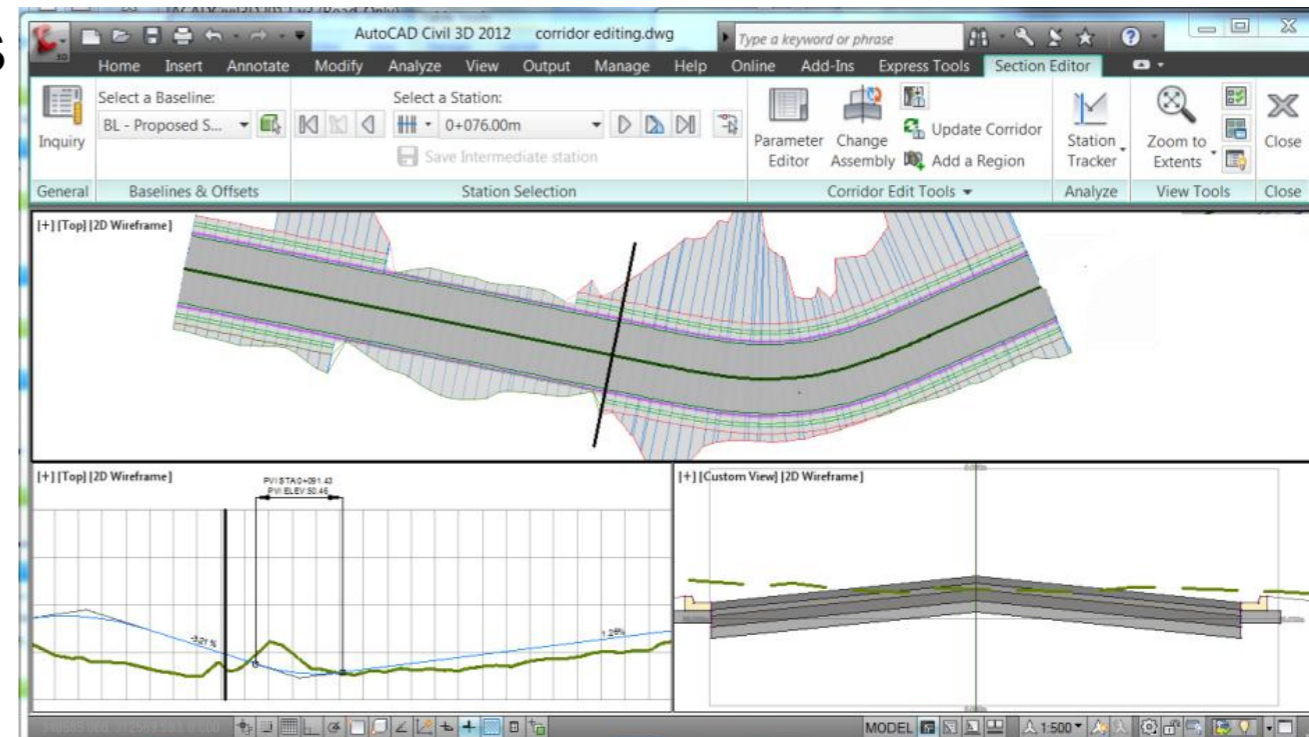
# Transportation Design

AutoCAD Civil 3D 2012

## Corridor Editing

- Edit corridors more easily within Cross Section Editor
  - Insert an assembly from the Tool Palette
  - Set or change targets
  - Subassembly grips
- Use multiple corridors for sections and volumes
- Sample skewed or angled sections

*Build your model more efficiently*

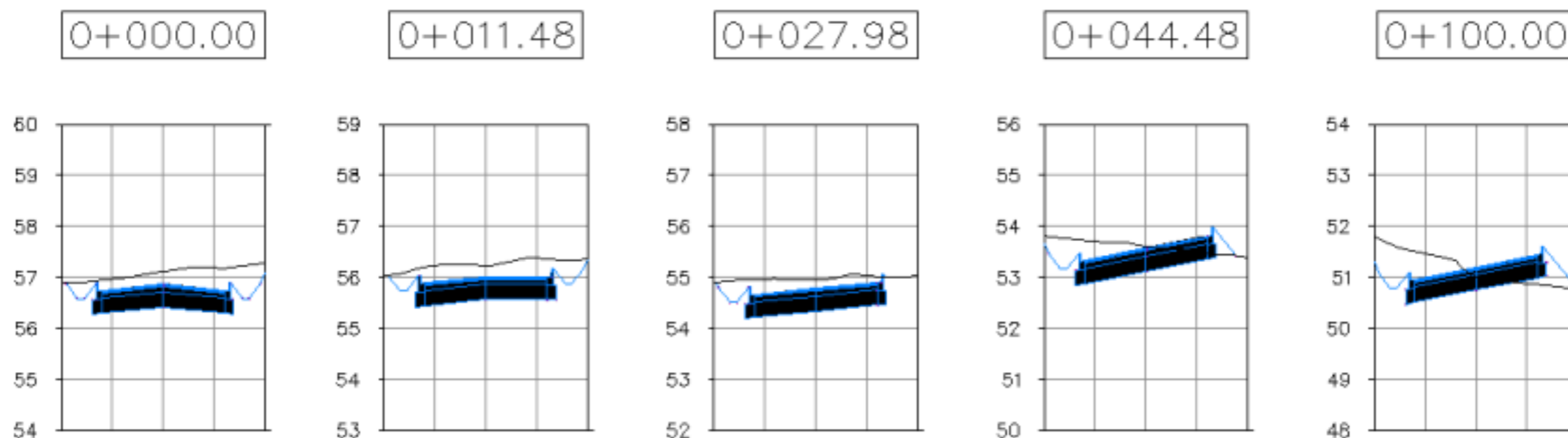


# Transportation Design

*AutoCAD Civil 3D 2012*

## Superelevation

- Axis of rotation location
- Parameters for maximum shoulder roll over



*More flexibility to help meet agency standards*

# Visualization and Analysis



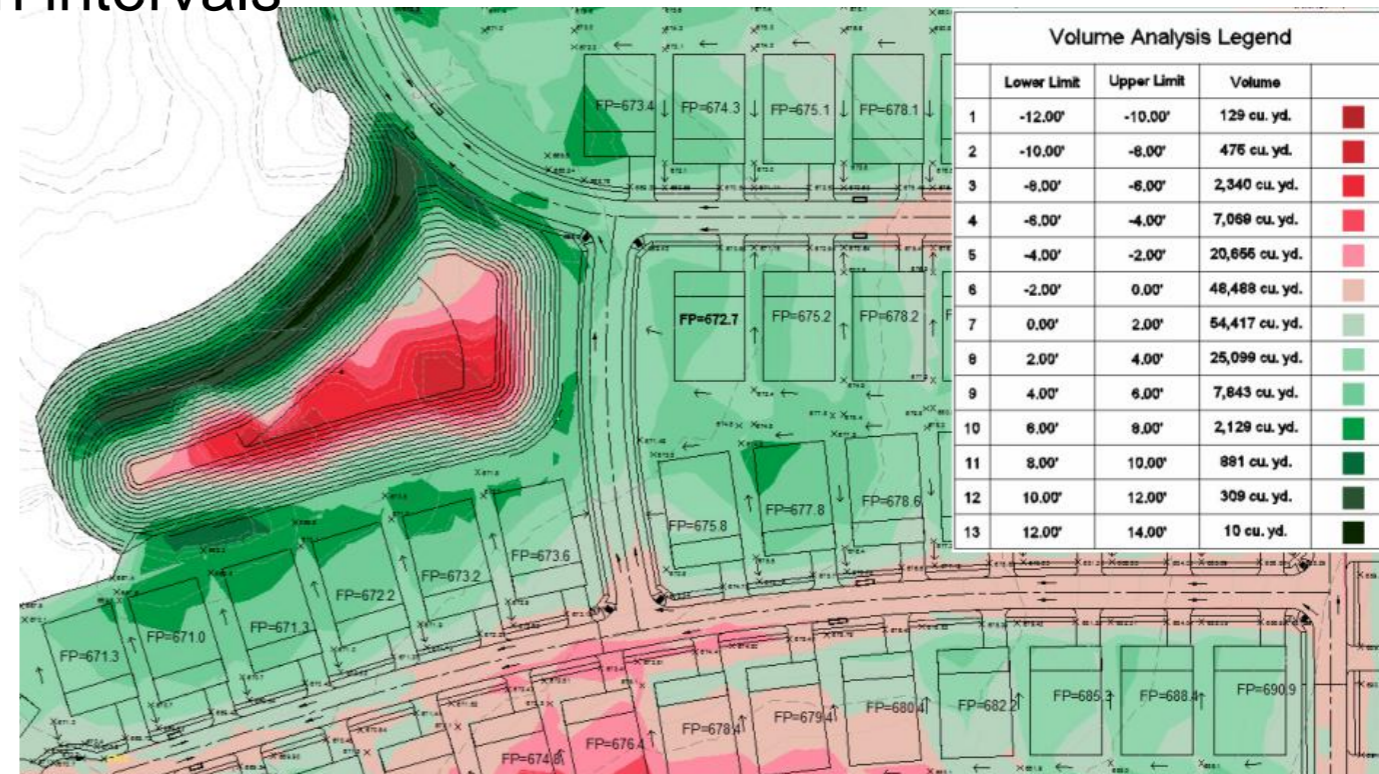
# Visualization and Analysis

AutoCAD Civil 3D 2012

## Surface Improvements

- Enhanced model performance with Surface Level of Detail
  - Control visibility
  - Improve drawing memory usage
- Analyze volumes with interval based methods
  - Elevation banding styles with built-in intervals
  - New datum parameter

*More control for better analysis*

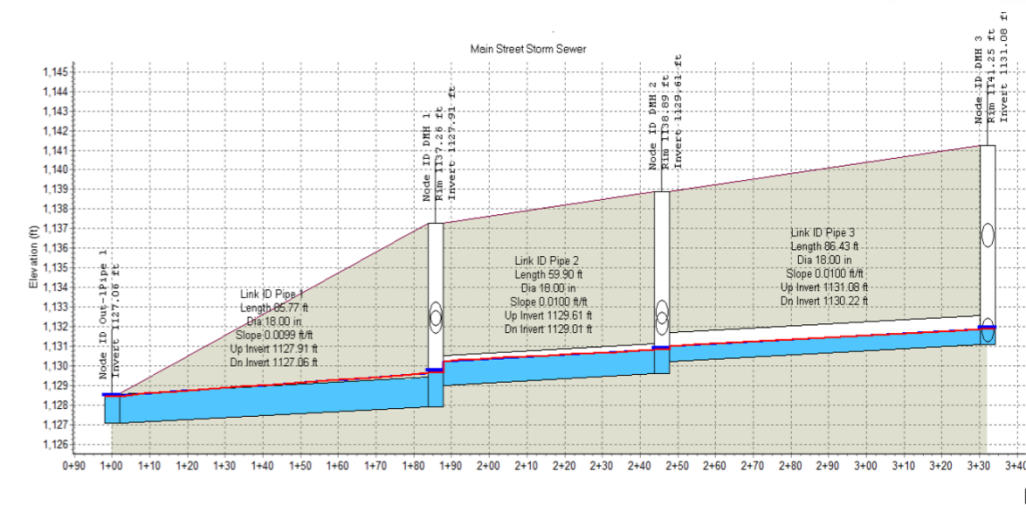
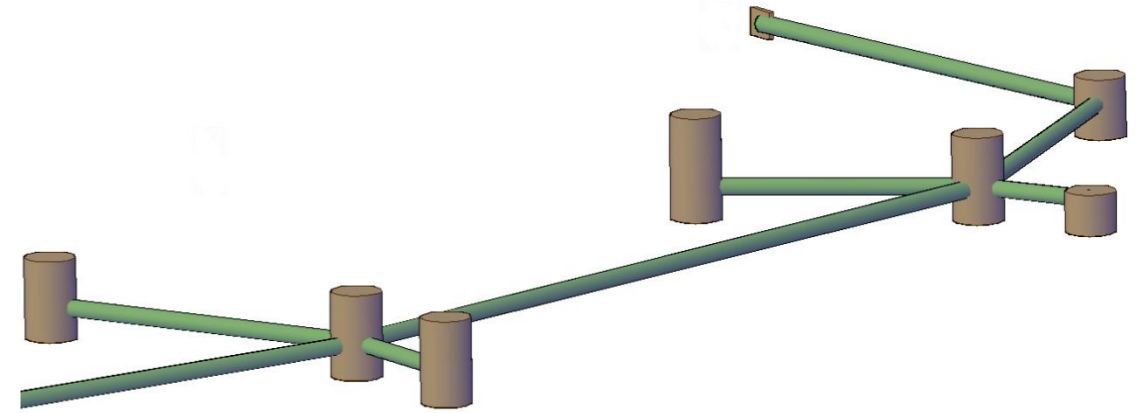


# Visualization and Analysis

AutoCAD Civil 3D 2012

## Water Analysis

- Import GIS data to create Civil 3D Pipe Networks
- New catchment tools to delineate watersheds and time of concentration
- Use more of your Civil 3D model within Autodesk® Storm and Sanitary Analysis 2012
- Build more intelligence into your model with the Autodesk Connection Points



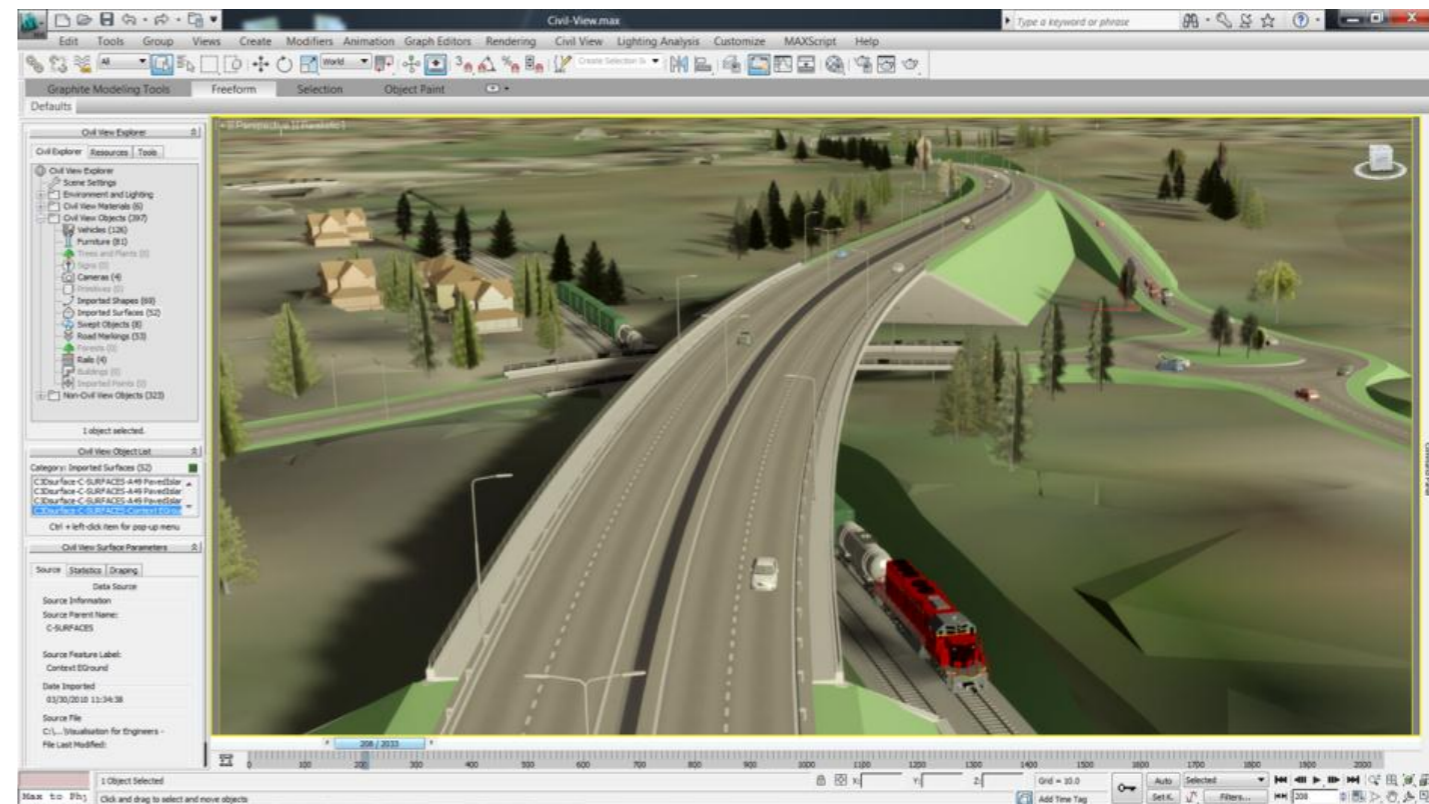
*Extend the value of readily available information*

# Visualization and Analysis

*AutoCAD Civil 3D 2012*

## Visualizing Civil Designs

- Built in Autodesk Civil View Exporter



*Communicate project intent at any stage*

# Autodesk Subscription

*Discover the Subscription Advantage*

Autodesk® Subscription allows customers to extend the value of their software investment with access to the latest releases, powerful web services, and expedited technical support.



# Autodesk®

Autodesk, AutoCAD, Civil 3D and 3ds Max are registered trademarks or trademarks of Autodesk, Inc., and/or its subsidiaries and/or affiliates in the USA and/or other countries. All other brand names, product names, or trademarks belong to their respective holders. Autodesk reserves the right to alter product and services offerings, and specifications and pricing at any time without notice, and is not responsible for typographical or graphical errors that may appear in this document.

© 2011 Autodesk, Inc. All rights reserved.